

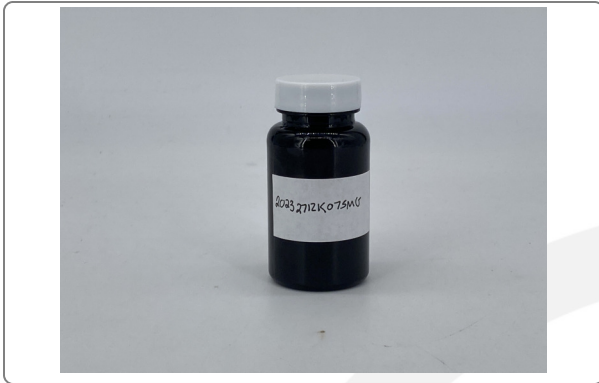
Knockout Gummies 75mg

METRC Batch:
METRC Sample:
Sample ID: 2401ENC0664_2063
Strain: Knockout Gummies 75mg
Matrix: Ingestible
Type: Soft Chew
Batch#: 20232712KO75mg0908

Collected: 01/23/2024
Received: 01/23/2024
Completed: 07/01/2024
Sample Size: 1 units;

Distributor

Lic. #
-,
-, CA, 91107



Summary

Test	Date Tested	Instr. Method	Result
Batch			Pass
Cannabinoids	01/23/2024	LC-DAD	Complete
Cannabinoids - Other	01/23/2024	LC-DAD	Complete

Cannabinoids

Method: SOP EL-CANNABINOIDS

73.63 mg/unit

Total THC

0.82 mg/unit

Total CBD

76.42 mg/unit

Total Cannabinoids

Analytes	LOD	LOQ	Result	Result	Result
	mg/g	mg/g	%	mg/g	mg/unit
THCa	0.012	0.036	ND	ND	ND
Δ9-THC	0.013	0.039	0.237	2.37	9.37
Δ8-THC	0.014	0.043	1.627	16.27	64.26
THCVa	0.014	0.042	ND	ND	ND
THCV	0.014	0.044	ND	ND	ND
CBDa	0.013	0.038	ND	ND	ND
CBD	0.012	0.037	0.021	0.21	0.82
CBN	0.011	0.035	0.009	0.09	0.37
CBGa	0.014	0.042	ND	ND	ND
CBG	0.013	0.038	ND	ND	ND
CBCa	0.011	0.034	ND	ND	ND
CBC	0.013	0.040	0.013	0.13	0.51
THCP (Δ9+Δ8)*	0.000	0.000	0.027	0.27	1.09
Total THC			1.864	18.64	73.63
Total CBD			0.021	0.21	0.82
Total Cannabinoids			1.935	19.35	76.42
Sum of Cannabinoids			1.935	19.35	76.42

1 Unit = 3.95g;

Total THC = THCa * 0.877 + Δ9-THC + Δ8-THC; Total CBD = CBDa * 0.877 + CBD; Total Cannabinoids = (cannabinoid acid forms * 0.877) + cannabinoids; Sum of Cannabinoids = cannabinoid acid forms + cannabinoids; LOQ = Limit of Quantitation; LOD = Limit of Detection; NT = Not Tested; ND = Not Detected. The reported result is based on a sample weight with the applicable moisture content for that sample. Foreign Material Method: SOP EL-FOREIGN; Moisture and Water Activity Method: SOP EL-WATER

*LOD/LOQ not evaluated, beyond scope of accreditation



Knockout Gummies 75mg

METRC Batch:
METRC Sample:
Sample ID: 2401ENC0664_2063
Strain: Knockout Gummies 75mg
Matrix: Ingestible
Type: Soft Chew
Batch#: 20232712KO75mg0908

Collected: 01/23/2024
Received: 01/23/2024
Completed: 07/01/2024
Sample Size: 1 units;

Distributor

Lic. #
-,
-, CA, 91107

Cannabinoids - Other

Method: SOP EL-CANNABINOIDS

ND Total THC	ND Total CBD	ND Total Cannabinoids
------------------------	------------------------	---------------------------------

Analytes	LOD mg/g	LOQ mg/g
Total THC		
Total CBD		
Total Cannabinoids		
Sum of Cannabinoids		

1 Unit = 3.95g;

Total THC = THCa * 0.877 + Δ9-THC + Δ8-THC; Total CBD = CBDa * 0.877 + CBD; Total Cannabinoids = (cannabinoid acid forms * 0.877) + cannabinoids; Sum of Cannabinoids = cannabinoid acid forms + cannabinoids; LOQ = Limit of Quantitation; LOD = Limit of Detection; NT = Not Tested; ND = Not Detected. The reported result is based on a sample weight with the applicable moisture content for that sample. Foreign Material Method: SOP EL-FOREIGN; Moisture and Water Activity Method: SOP EL-WATER

